

PIER 70

WATERFRONT, MASSIVE, RUSTIC. WITH ITS BRICK EXTERIORS AND MIGHTY STEEL BEAMS, THE BUILDINGS AT PIER 70 EVOKE SAN FRANCISCO'S SHIPBUILDING PAST. BOTH INDOOR AND OUTDOOR VENUES CAN HOST CAPACITIES UP TO 20,000 PEOPLE. IT'S THE IDEAL SPOT FOR EXPOSITIONS, CONCERT EVENTS, FESTIVALS, AND MORE.

VENUE DETAILS

DIMENSIONS: WAREHOUSE + PARKING LOT

SQUARE FEET: 227,200

CEILING HEIGHT: 40 FEET +

MAX CAPACITY: 20,000

GOOD FOR: WATERFRONT, MASSIVE, RUSTIC

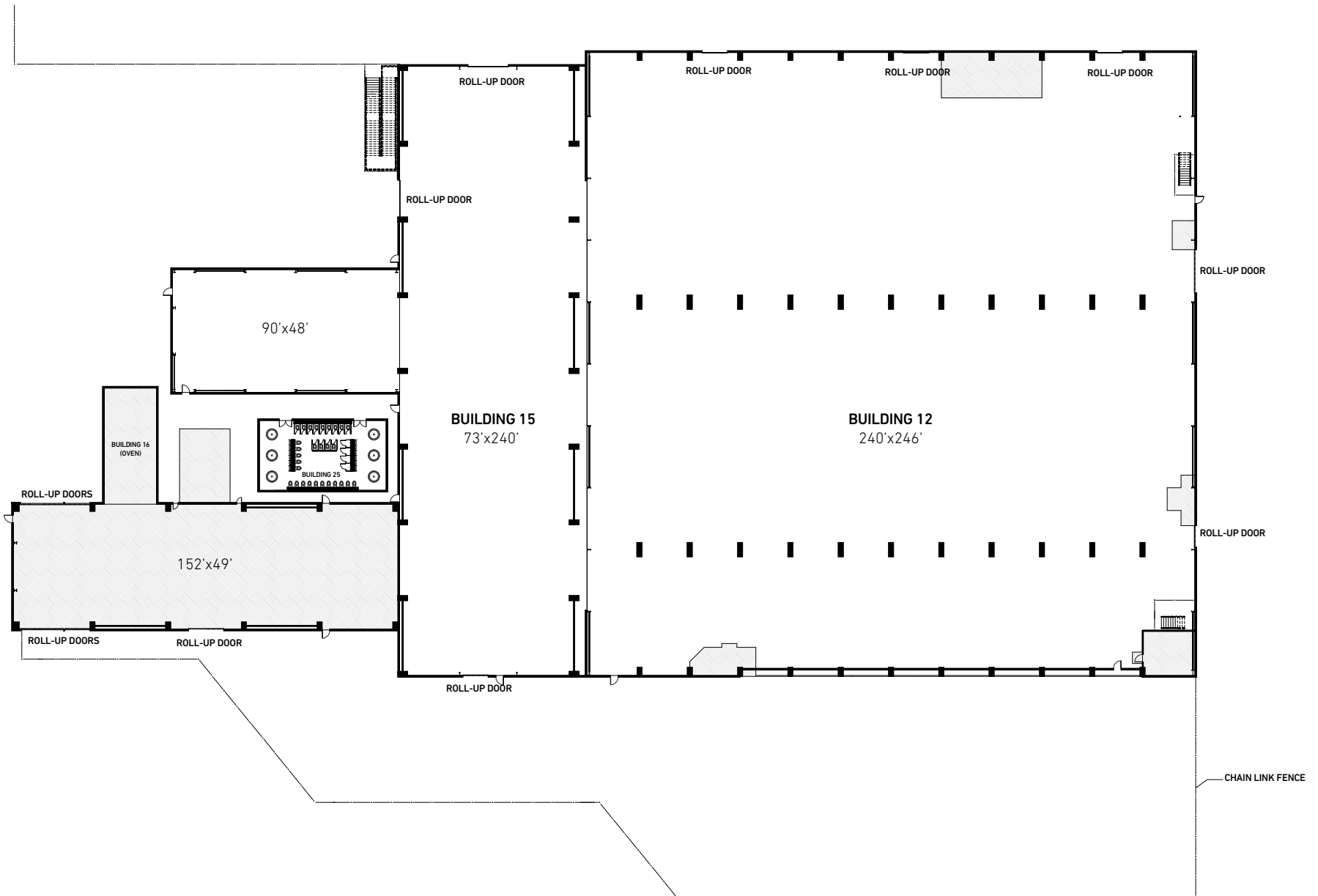


8 22ND ST
SAN FRANCISCO, CA 94107
T 415.608.2220
PIER70PARTNERS.COM

GENERAL INFORMATION



88 FIFTH STREET | SAN FRANCISCO, CA 94103
T 415.377.2000 | NONPLUSULTRA.INC.COM



8 22ND ST
 SAN FRANCISCO, CA 94107
 T 415.608.2220
 PIER70PARTNERS.COM

FLOORPLAN - GROUND FLOOR



88 FIFTH STREET | SAN FRANCISCO, CA 94103
 T 415.377.2000 | NONPLUSULTRAINC.COM