

THE MINT

HISTORIC, STATELY, JAW-DROPPING. THE CLASSICAL REVIVALIST ARCHITECTURE AUTOMATICALLY UPGRADES ANY EVENT WITH A VIP VIBE. LOCATED JUST A COIN'S THROW FROM THE MOSCONE CENTER, THE VENUE HAS BEEN RENOVATED JUST ENOUGH TO ACCOMMODATE MODERN EQUIPMENT, BUT WITHOUT LOSING ANY OF THE HISTORICAL GRANDEUR. WITH 100,000 SQ/FT TO PLAY WITH, IT GUARANTEES A TRULY MEMORABLE EVENT.

VENUE DETAILS

DIMENSIONS: MULTIPLE ROOMS + COURTYARD

SQUARE FEET: 90K

CEILING HEIGHT: 20 FEET / OPEN COURTYARD

MAX CAPACITY: 999

GOOD FOR: HISTORIC, STATELY, JAW-DROPPING

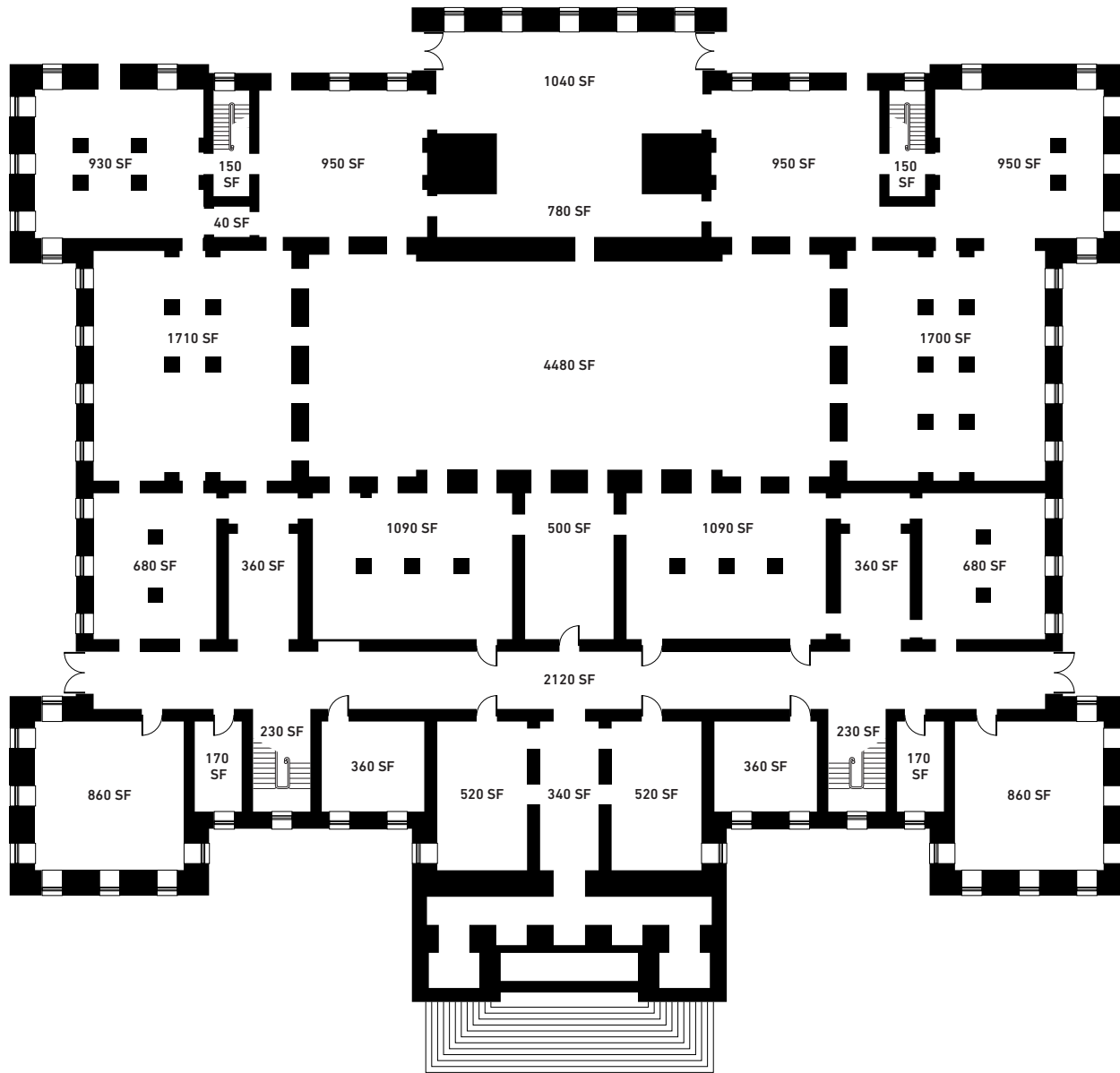


88 5TH STREET
SAN FRANCISCO, CA 94103
T 415.608.2220
THEFMINT.COM

GENERAL INFORMATION



88 FIFTH STREET | SAN FRANCISCO, CA 94103
T 415.377.2000 | NONPLUSULTRA.INC.COM

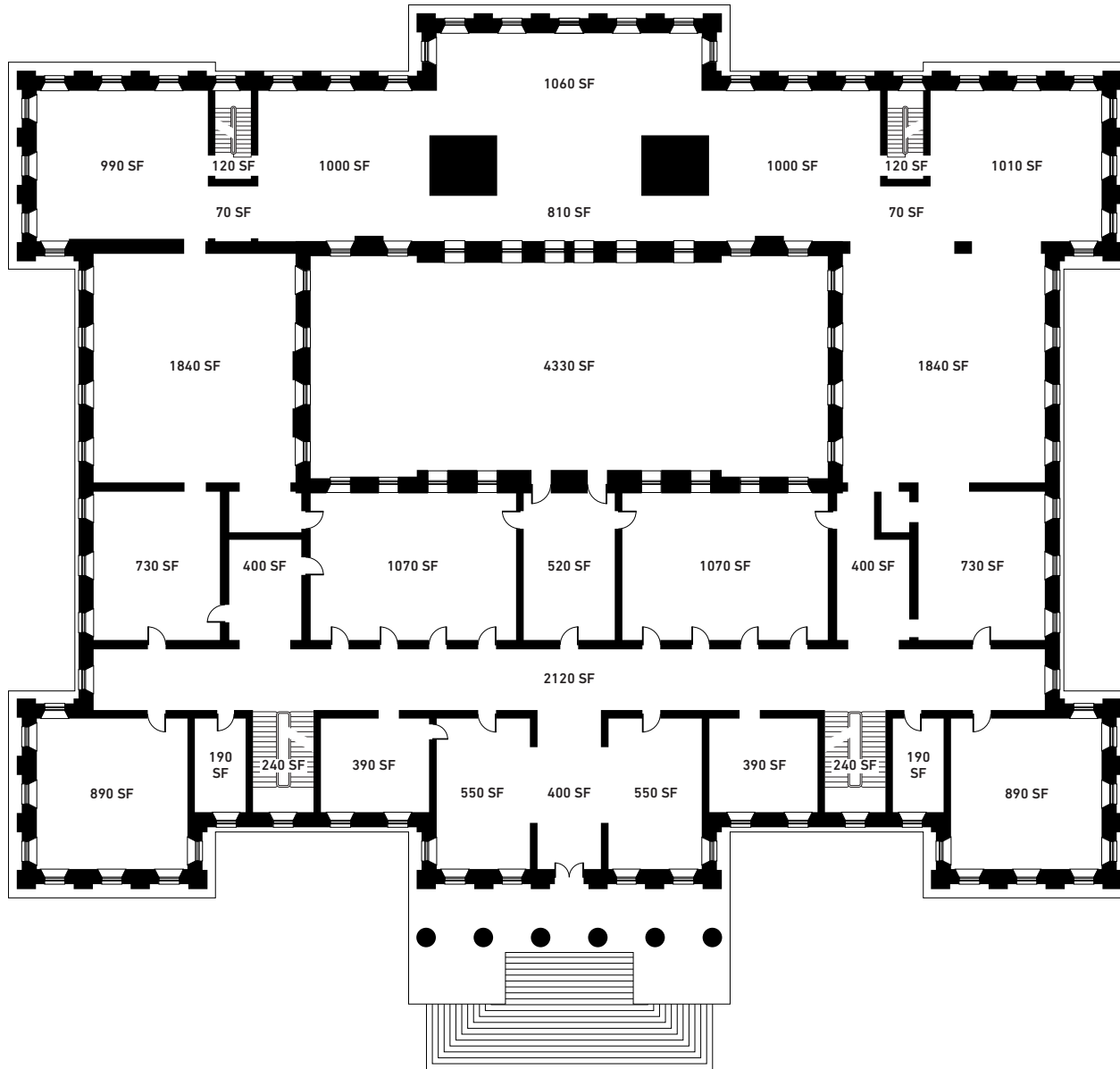


88 5TH STREET
 SAN FRANCISCO, CA 94103
 T 415.608.2220
 THESFMINT.COM

FLOORPLAN - GROUND FLOOR



88 FIFTH STREET | SAN FRANCISCO, CA 94103
 T 415.377.2000 | NONPLUSULTRA.INC.COM

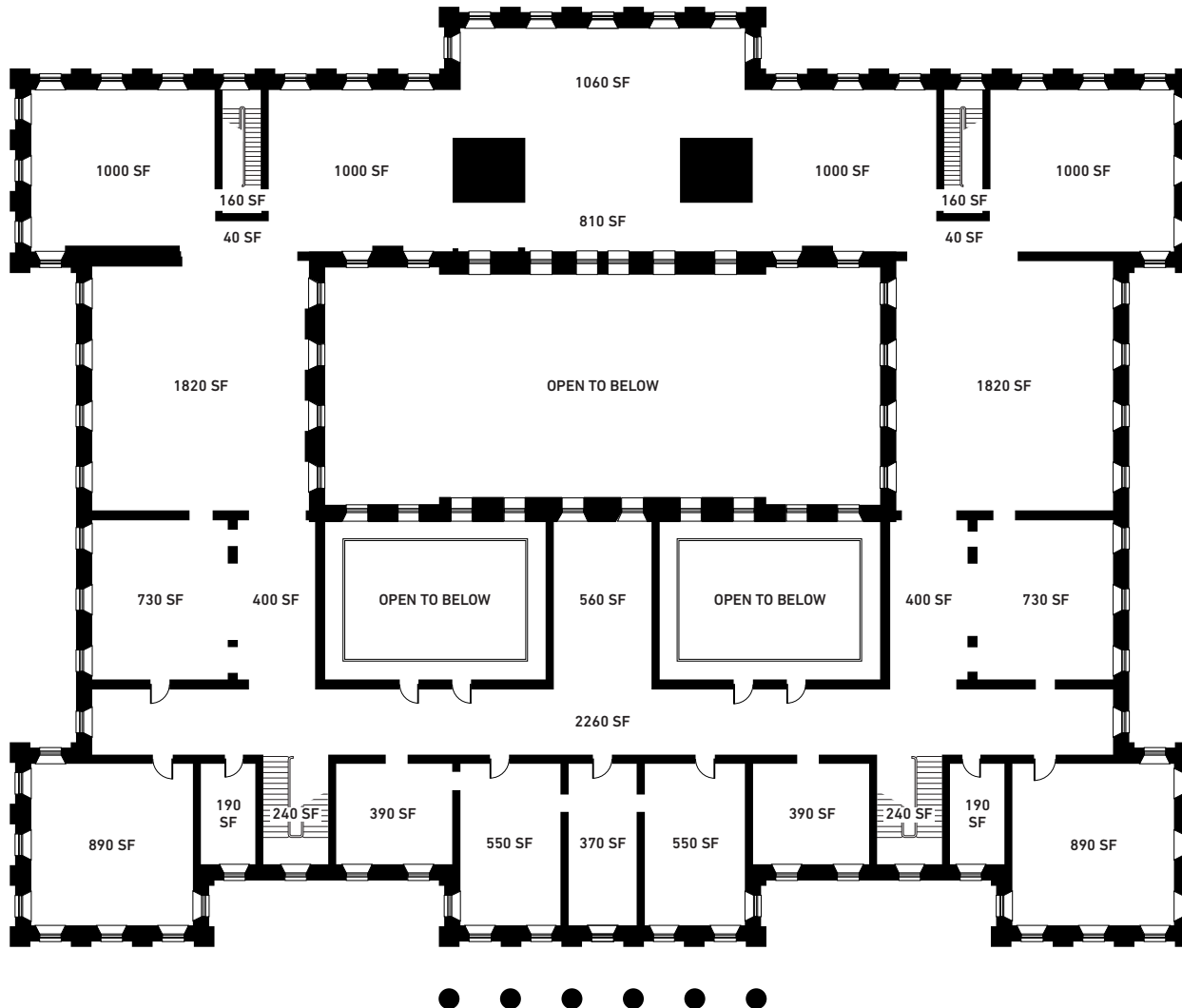


88 5TH STREET
 SAN FRANCISCO, CA 94103
 T 415.608.2220
 THESFMINT.COM

FLOORPLAN - FIRST FLOOR



88 FIFTH STREET | SAN FRANCISCO, CA 94103
 T 415.377.2000 | NONPLUSULTRA.INC.COM

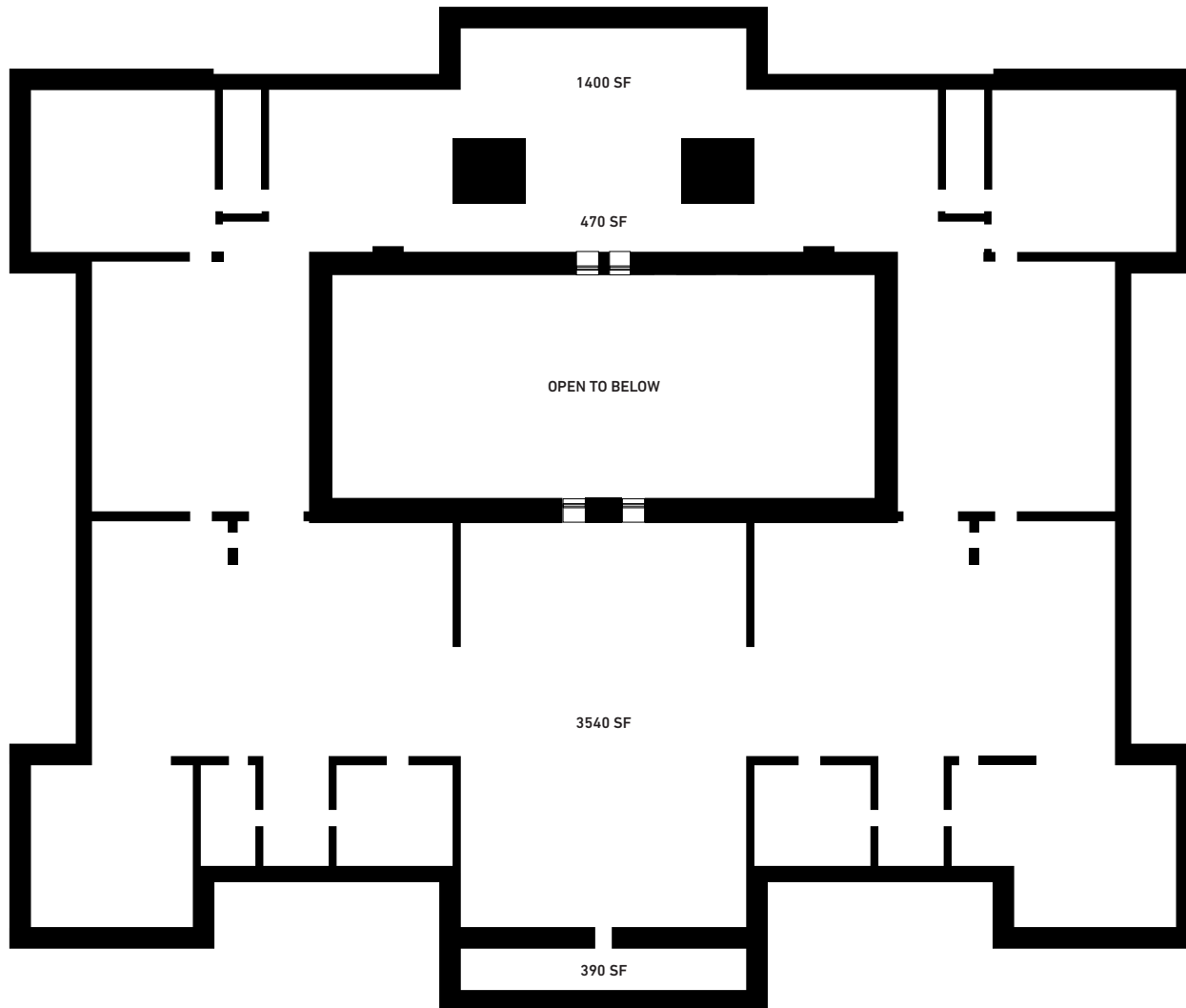


88 5TH STREET
 SAN FRANCISCO, CA 94103
 T 415.608.2220
 THESFMINT.COM

FLOORPLAN - SECOND FLOOR



88 FIFTH STREET | SAN FRANCISCO, CA 94103
 T 415.377.2000 | NONPLUSULTRA.INC.COM



88 5TH STREET
SAN FRANCISCO, CA 94103
T 415.608.2220
THEFMINT.COM

FLOORPLAN - ATTIC



88 FIFTH STREET | SAN FRANCISCO, CA 94103
T 415.377.2000 | NONPLUSULTRAINC.COM